

MBP Antibody (Y203)
Affinity Purified Rabbit Polyclonal Antibody (Pab)
Catalog # AP2766a**Specification**

MBP Antibody (Y203) - Product Information

Application	WB,E
Primary Accession	P02686
Reactivity	Human
Host	Rabbit
Clonality	Polyclonal
Isotype	Rabbit IgG
Antigen Region	177-209

MBP Antibody (Y203) - Additional Information**Gene ID** 4155**Other Names**

Myelin basic protein, MBP, Myelin A1 protein, Myelin membrane encephalitogenic protein, MBP

Target/Specificity

This MBP antibody is generated from rabbits immunized with a KLH conjugated synthetic peptide between 177-209 amino acids from human MBP.

Dilution

WB~~1:16000

E~~Use at an assay dependent concentration.

Format

Purified polyclonal antibody supplied in PBS with 0.09% (W/V) sodium azide. This antibody is purified through a protein A column, followed by peptide affinity purification.

Storage

Maintain refrigerated at 2-8°C for up to 2 weeks. For long term storage store at -20°C in small aliquots to prevent freeze-thaw cycles.

Precautions

MBP Antibody (Y203) is for research use only and not for use in diagnostic or therapeutic procedures.

MBP Antibody (Y203) - Protein Information**Name** MBP**Function** The classic group of MBP isoforms (isoform 4-isoform 14) are with PLP the most abundant protein components of the myelin membrane in the CNS. They have a role in both its formation and stabilization. The smaller isoforms might have an important role in remyelination of

denuded axons in multiple sclerosis. The non-classic group of MBP isoforms (isoform 1-isoform 3/Golli-MBPs) may preferentially have a role in the early developing brain long before myelination, maybe as components of transcriptional complexes, and may also be involved in signaling pathways in T-cells and neural cells. Differential splicing events combined with optional post-translational modifications give a wide spectrum of isomers, with each of them potentially having a specialized function. Induces T-cell proliferation.

Cellular Location

Myelin membrane; Peripheral membrane protein; Cytoplasmic side. Note=Cytoplasmic side of myelin

Tissue Location

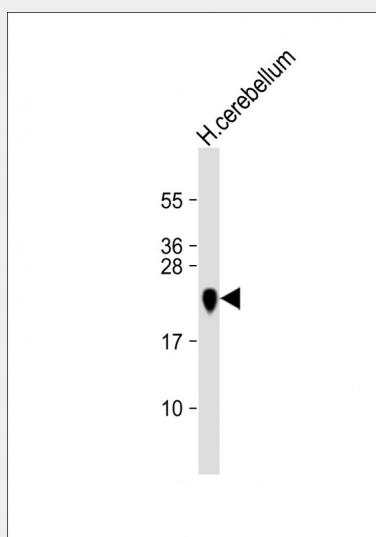
MBP isoforms are found in both the central and the peripheral nervous system, whereas Golli-MBP isoforms are expressed in fetal thymus, spleen and spinal cord, as well as in cell lines derived from the immune system.

MBP Antibody (Y203) - Protocols

Provided below are standard protocols that you may find useful for product applications.

- [Western Blot](#)
- [Blocking Peptides](#)
- [Dot Blot](#)
- [Immunohistochemistry](#)
- [Immunofluorescence](#)
- [Immunoprecipitation](#)
- [Flow Cytometry](#)
- [Cell Culture](#)

MBP Antibody (Y203) - Images



Anti MBP Antibody (Y203) at 1:16000 dilution + human cerebellum lysate Lysates/proteins at 20 µg per lane. Secondary Goat Anti-Rabbit IgG, (H+L), Peroxidase conjugated at 1/10000 dilution. Predicted band size : 33 kDa Blocking/Dilution buffer: 5% NFDM/TBST.

MBP Antibody (Y203) - Background

MBP is a major constituent of the myelin sheath of oligodendrocytes and Schwann cells in the nervous system. However, MBP-related transcripts are also present in the bone marrow and the immune system. These mRNAs arise from the long MBP gene (otherwise called Golli-MBP) that contains 3 additional exons located upstream of the classic MBP exons. Alternative splicing from the Golli and the MBP transcription start sites gives rise to 2 sets of MBP-related transcripts and gene products. The Golli mRNAs contain 3 exons unique to Golli-MBP, spliced in-frame to 1 or more MBP exons. They encode hybrid proteins that have N-terminal Golli aa sequence linked to MBP aa sequence. The second family of transcripts contain only MBP exons and produce the well characterized myelin basic proteins. This complex gene structure is conserved among species suggesting that the MBP transcription unit is an integral part of the Golli transcription unit and that this arrangement is important for the function and/or regulation of these genes.

MBP Antibody (Y203) - References

Kawamura,K., J. Immunol. 181 (5), 3202-3211 (2008)
Majava,V., BMC Struct. Biol. 8, 10 (2008)
Boylan,K.B.,Genomics 6 (1), 16-22 (1990)